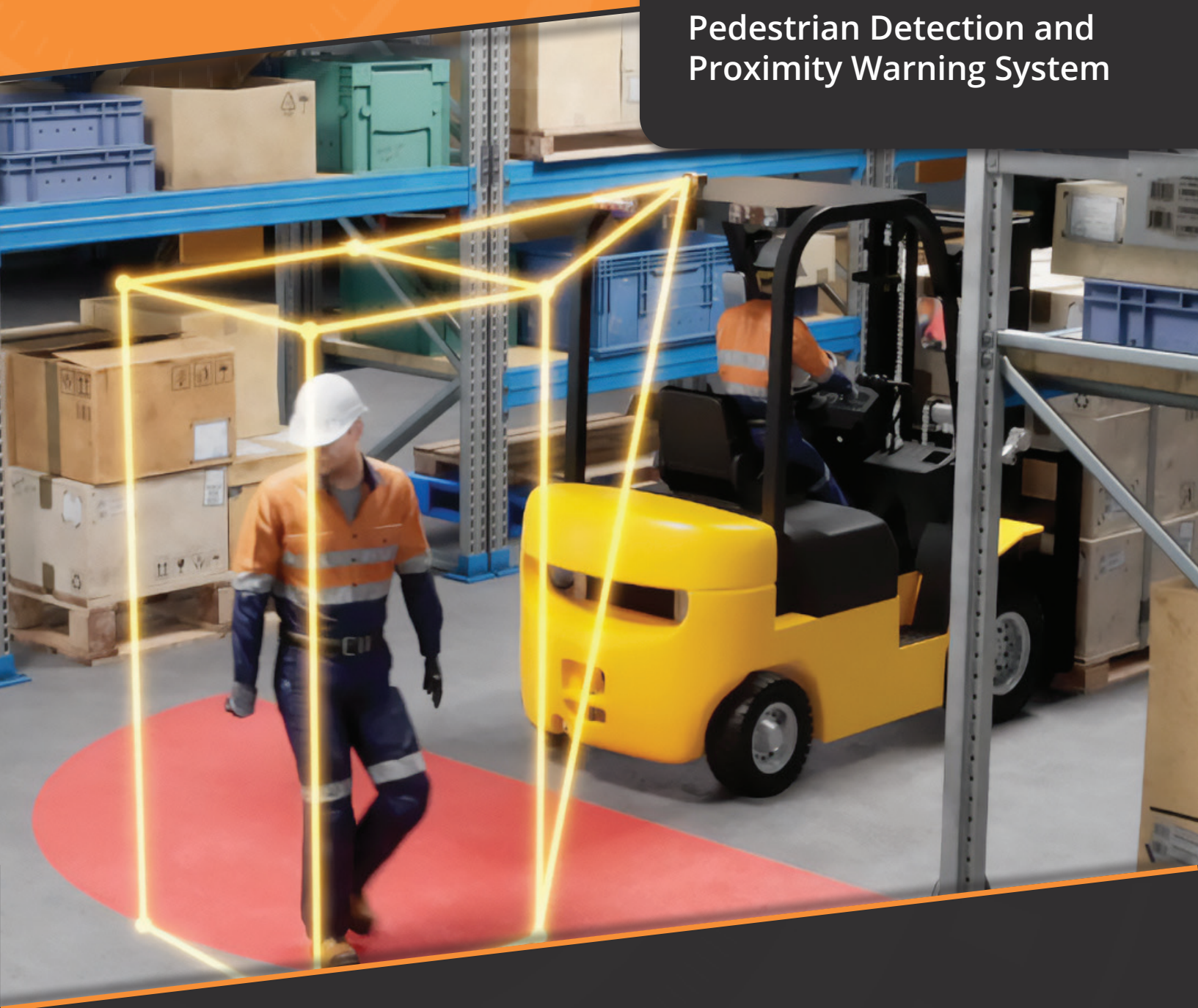


**AI** Powered By  
ARTIFICIAL  
INTELLIGENCE

## Pedestrian Detection and Proximity Warning System



proxicam™



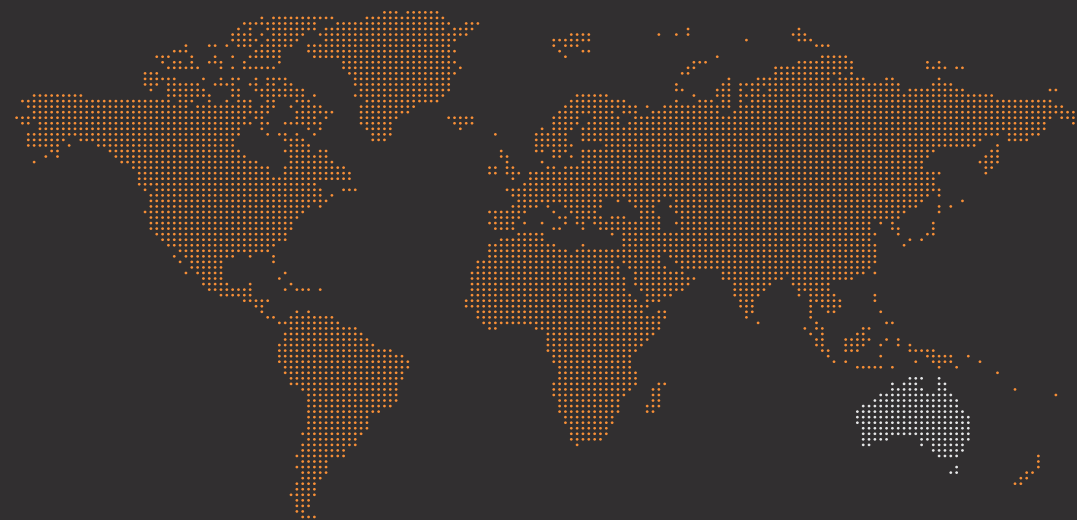
# Proxicam™

## Our Vision Saves Lives™

Global leader in pedestrian safety using computer vision, data analytics and video telematics with cloud reporting.



AUSTRALIA  
USA  
CANADA  
CHILE  
MEXICO  
COLOMBIA  
BRAZIL  
PERU  
NEW ZEALAND  
INDIA  
SINGAPORE  
DUBAI  
SOUTH AFRICA



Proudly Designed & Developed in Australia.  
**Saving Lives Across the Globe.**



## Protect your people.

Ensure safe separation between humans and machines.

### Prevent avoidable collisions

Proxicam's AI-powered cameras monitor human proximity relative to the machine and deliver real-time alerts to notify the operator when detected in the predefined zones.

### Enhance traffic management systems

Trust Proxicam as an effective engineering control to proactively minimise the risks and hazards of human-machine interaction.

### Meet compliance obligations

Satisfy regulatory requirements and workplace safety policies with Proxicam's industry-leading pedestrian detection and awareness technology.

### Improve operational efficiencies

Proxicam's real-time warnings turn incidents into near-misses, reducing workflow disruptions and incident-related downtime, while enabling data-driven improvements.

### Build on a culture of safety

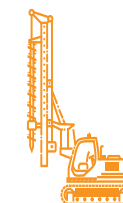
Reinforce safe behaviour and strengthen safety protocols by mitigating human error and complacency around machine exclusion zones.



WAREHOUSING



CONSTRUCTION



MINING



RECYCLING



FORESTRY



AGRICULTURE



# AI-powered camera.

Proxicam's industry-leading camera is smarter, tougher and built-for-purpose.

## At-the-edge computing

Proxicam's innovative system architecture embeds the intelligence into the camera itself - processing data locally, reducing latency and improving detection performance.

## Advanced AI object recognition

Through years of deep learning and on-going simulated training, Proxicam's algorithms distinguish the human form in all types of complex environments, light and weather conditions. No RFID tags or specific safety vests required.

## 99.8% detection accuracy

Proxicam's computer vision outperforms its competitors, achieving high accuracy metrics in Precision and Recall ensuring reliable detection and fewer false positives.

## Ultra wide 170° coverage

Featuring a 1.9mm fisheye lens, Proxicam sees wider than the human eye's peripheral vision, reducing operational blind spots while maximising detection range.

## QR code identification

Strategically-placed QR codes give machine operators visual and audible notification to speed zones, objects and infrastructure, low height and high-risk areas



## Engineered to be robust

With a die-cast aluminium body and stainless steel mounting hardware, Proxicam cameras are rated at IP69K, water and dust proof to withstand demanding environments.

## Visual health indication

On-camera LEDs provide system health indication, with boot-up sequencing for pre-start checks and compliance and operational audits.

## Input / output triggers

Built-in I/O controllers allow for custom solutions, interfacing with sirens, beacons, traffic management systems and machine controls.

## Tamper alert

Cover the lens, and Proxicam issues audible and visual warnings to the operator, while generating an event on the Proxicam DV-Hub or FleetHQ cloud platform (if optioned).

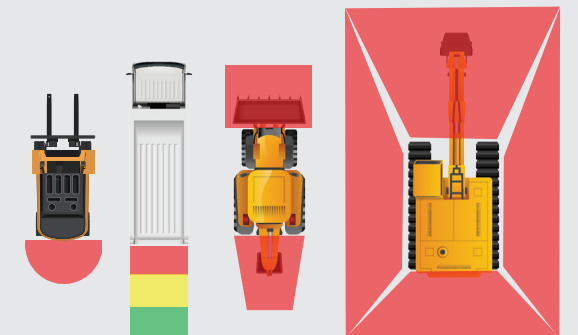


## Advanced zone functionality.

Maximise pedestrian safety without impacting operations and productivity.

## Customisable exclusion & multi-staged zones

Detection zones can be set in a range of shapes and sizes - from semi-circles, rectangles and trapezoids to unique free-form zones to suit any type of machine or operational requirement.

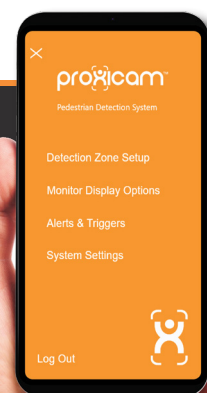


## FWD | REV Dynamic detection (optional)

The system issues detection alerts only from the camera facing the direction of travel. The opposite camera is muted and does not issue alerts while the machine is moving away from the pedestrian.

## Safe-to-approach

Automatically mutes all Proxicam detection events when activated by a machine's park brake, lockout or other hard control. Allowing workers to breach exclusion zones, safely and controlled.



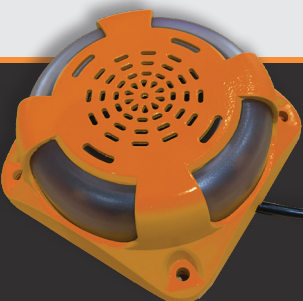
## Quick, easy, wireless setup.

Proxicam's Camera Calibration App works on any smartphone or tablet with WiFi.



## Real-time alerts save lives.

Audible and visual warnings give machine operators and pedestrians immediate notification to proximity zone breaches.







## Eliminate blind spots.

Proxicam's LCD monitor enhances operator vision and delivers immediate audible and visual notification to pedestrian proximity.

### 360° all-around visibility

Extend operator vision and minimise risk around machines of any size, with up to 4 Proxicam cameras providing complete coverage.

### Easy-to-see display

Proxicam's 7-inch TFT LCD monitor delivers a clear, bright HD image in single, split, triple or quad view modes, with ambient light-sensing and screen auto dimming.



### Real-time alerts

On-screen visual and audible notifications warn operators of proximity events and exclusion zone breaches.

### Customisable audible warnings

A choice of spoken voice or audible alerts, across a range of pitches, ensure Proxicam's audible warnings are heard in any acoustic environment.

### Tamper proof

Prevent unauthorised access to volume, system settings and menus, secured with an on-screen alpha-numeric password.

### Ruggedised design

Cased in die-cast aluminium, Proxicam's LCD monitor is rated IP66, providing protection from water and dust ingress in harsh environments.

## Log detection events & video.

Proxicam's DV-Hub records proximity zone breaches and machine telemetry data, stored locally or pushed to the cloud (optional)

### Incident video for audits and review

Video evidence of near-miss and incident data helps improve engineering controls or assist in training and investigations.

### Continuous & event-based recording

Proxicam's DV-Hub captures HD video from up to 4 cameras, together with the machine's telemetry data, including speed, location and heading.

### Hot-swappable storage

With a removable SSD hard drive, (up to 2TB) the DV-Hub stores months of video and event data, connecting to any PC via USB to SATA cable.



### Ruggedised design

The DV-Hub's die-cast aluminium body provides IP69K water and dust protection, meeting MIL-SPEC standards for vibration resistance and durability.

### Wireless connectivity (optional)

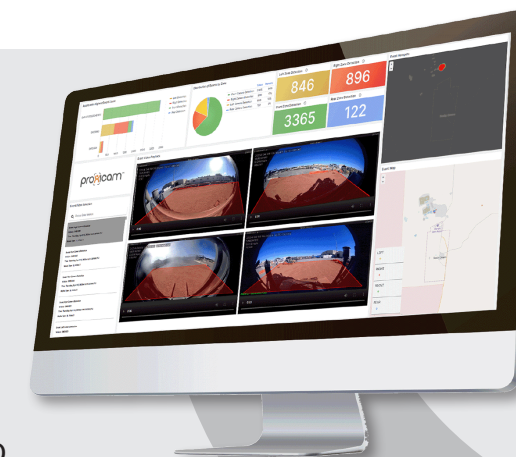
Connect via 4G SIM (not supplied) or local WiFi network to enable FleetHQ cloud storage of events and video plus over-the-air firmware updates\* (\*requires subscription)

### Tamper proof & secure

Lock and key prevents unauthorised physical access to the hard drive, while cloud-synced data is encrypted and transmitted securely.

## Make data-driven decisions.

FleetHQ web portal empowers management with valuable safety insights from event-generated data & video.



### Secure cloud storage

Access up to 12 months of historical proximity event data, with corresponding video & asset telemetry information, via any web browser.

### Easy to use dashboard

Collates and presents proximity events as graphs, charts and heat-maps, together with video, for reviewing, analysis and sharing.

### Real-time event notification

Keep management at the pulse of incidents and near misses with immediate in-portal pop-ups or email notification.

### Customisable reporting

Create custom reports and event notifications with advanced logic and scheduled emails to multiple recipients or groups.



# Modular, plug n' play design.

We've made Proxicam easy to install and configure on any machine.

## Systems fit-for-purpose

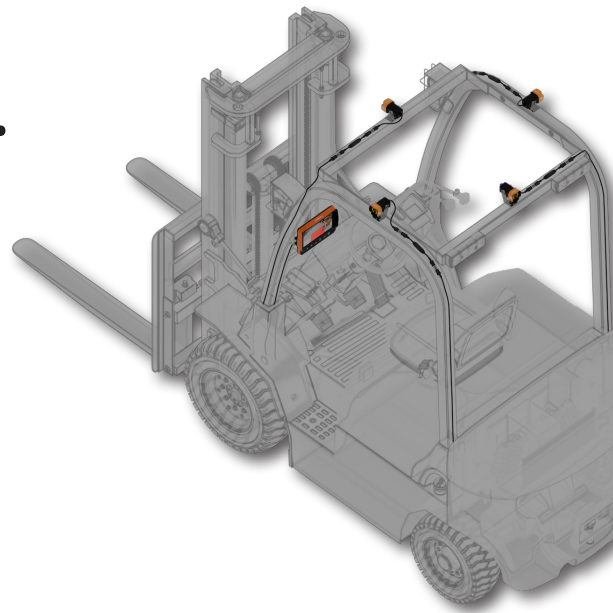
Proxicam's modular nature allows users to option the hardware and functionality best suited to the machine and it's operational requirements.

## Designed for rapid deployment

Screw-lock connectors, junctions and a range of extension harnesses and adaptors allow for quick installation across large fleets.

## Future-proof technology

Proxicam's plug n' play hardware and upgradeable firmware ensure that existing systems benefit from AI algorithm updates, on-going product development or future enhancements.



**proxicam**<sup>™</sup>  
Our Vision Saves Lives<sup>™</sup>



Proudly Designed & Developed in Australia

[www.proxicam.ai](http://www.proxicam.ai)

[support@proxicam.ai](mailto:support@proxicam.ai)